

Configure a conditional decision step

This feature allows you to configure a decision step based on the answer to one or more questions. The decision step will be triggered only if the condition(s) is (are) met. To do this, you need the superuser role.

STEP 1

To configure a conditional decision step in a control, navigate to the list of controls in the menu, under **Configuration** → **Controls**, then search for the control.

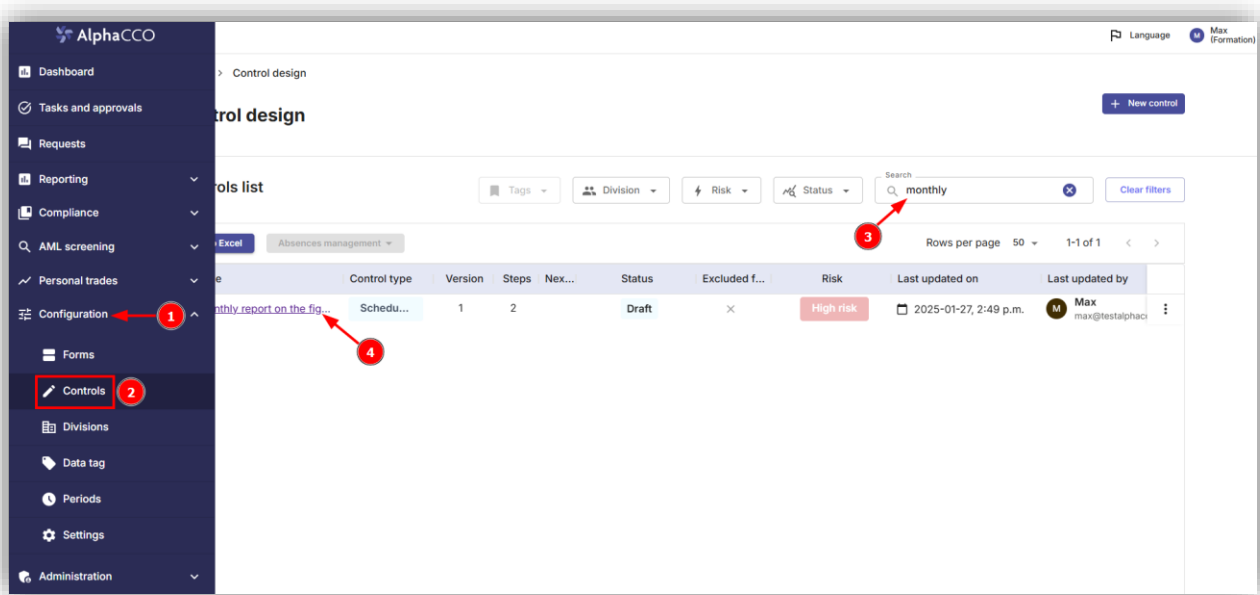


Figure 1: List of controls

STEP 2

Once you have identified the control to edit in the list, click on the control name or select the **Edit** option in the control options (at the far right of the line).

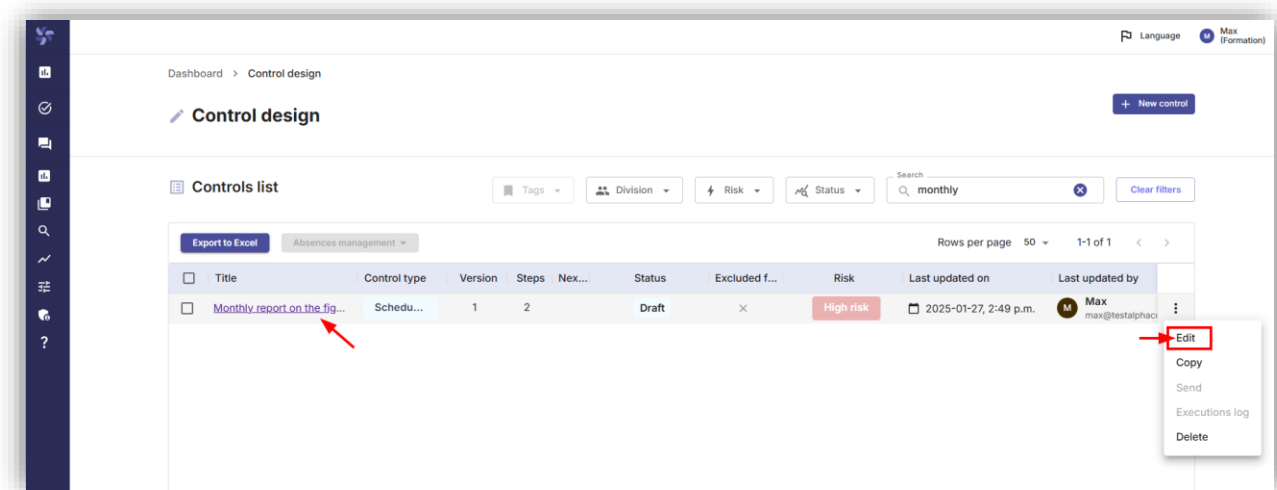


Figure 2: Options in the control list

STEP 3

Go to the decision step in the control configuration, then click on **Create a condition** icon.

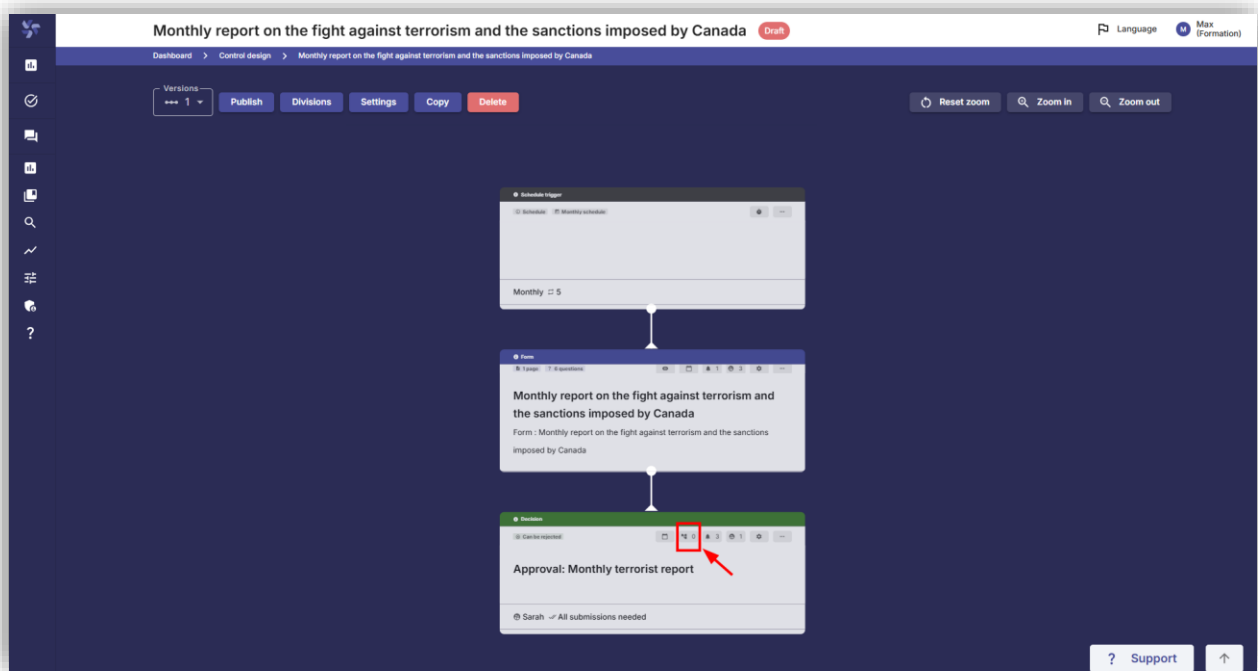
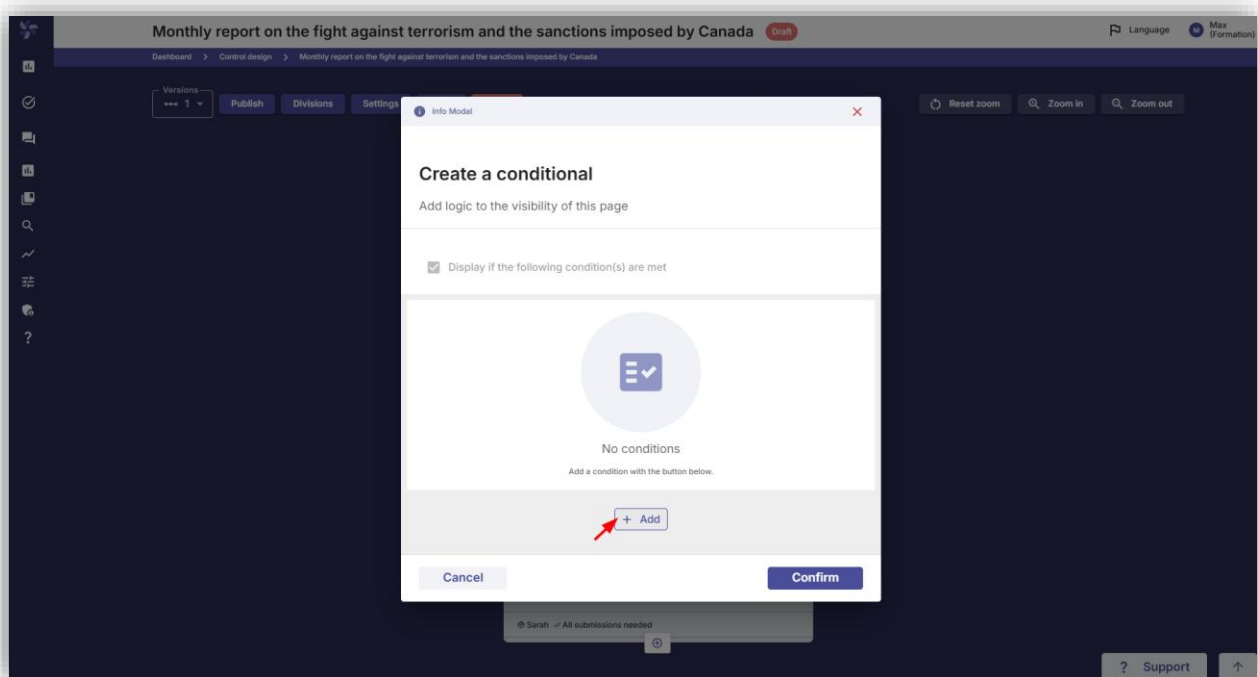


Figure 3: Control configuration, decision step

Go to the **Create conditions** tab, then add conditions to trigger the decision step. Note that it is possible to add multiple conditions or groups of conditions. Click on "**Confirm**" to save and complete the configuration.



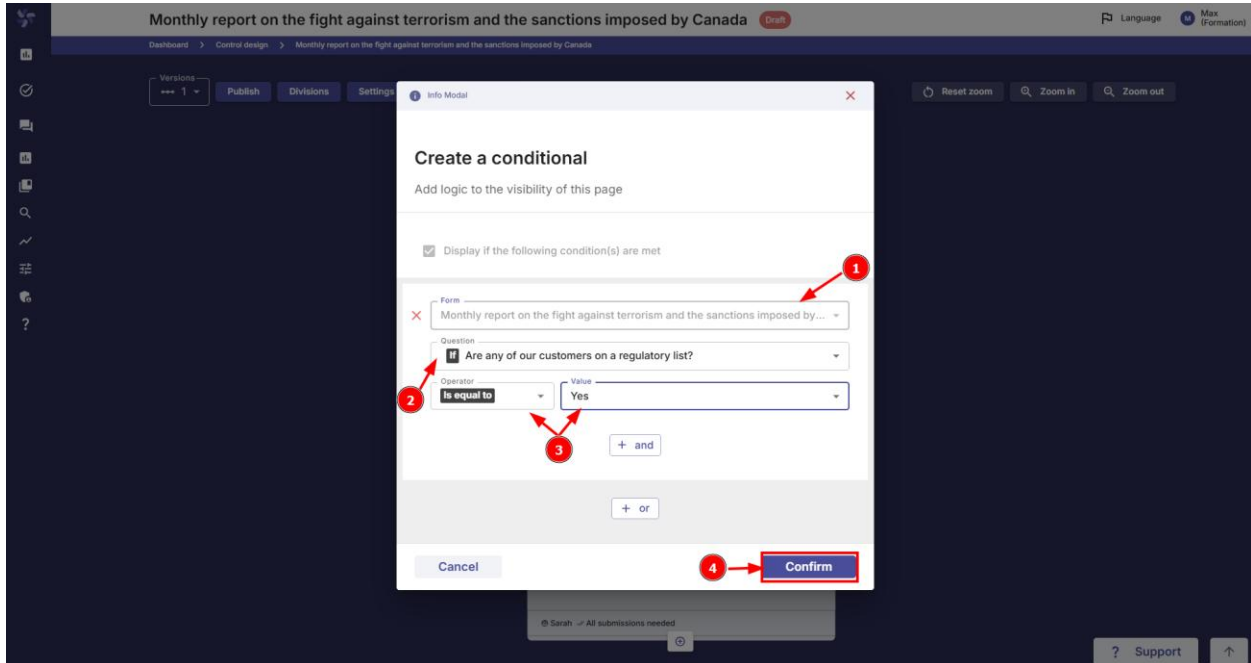
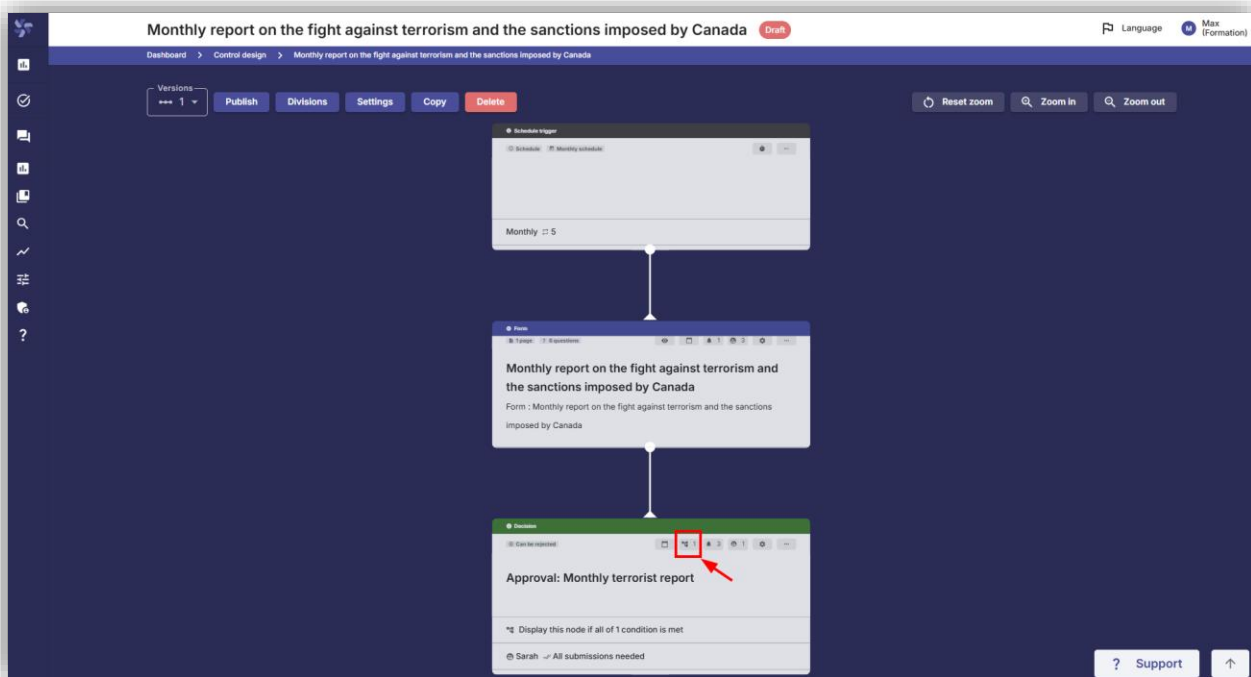
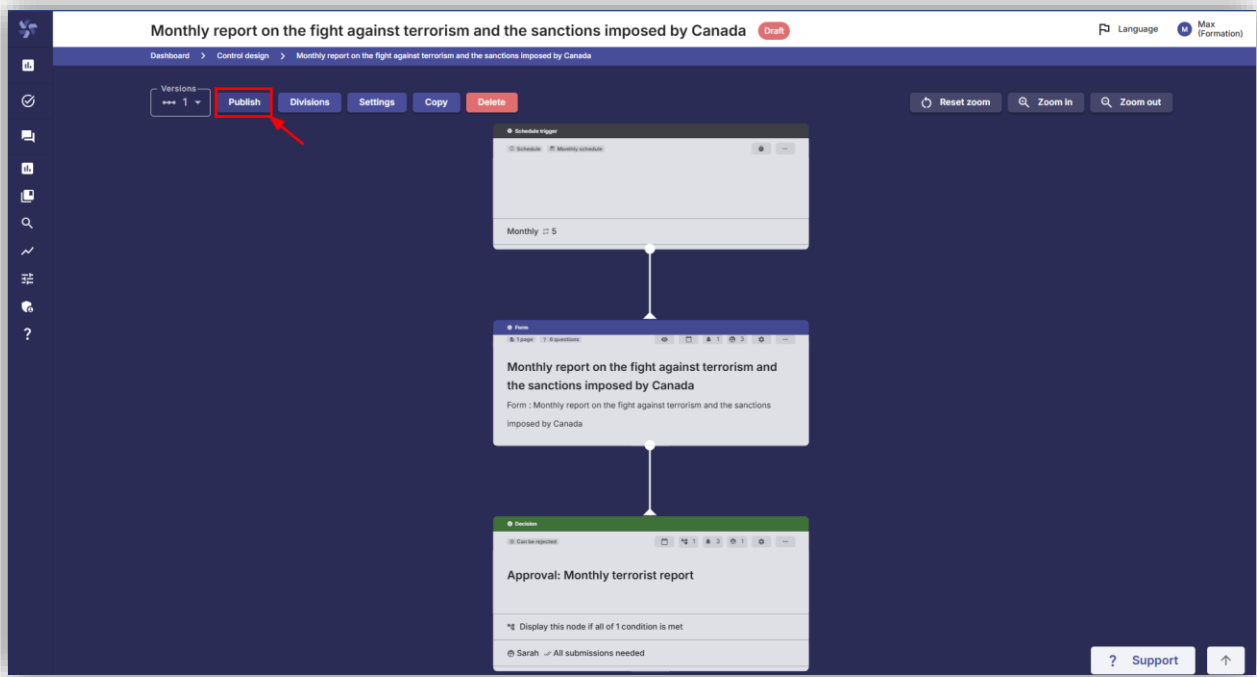


Figure 4.5: Decision trigger parameters configuration windows

STEP 4

Once the conditions of the conditional decision step have been configured, click on **Publish** to activate the new configuration.





Figures 6,7: Control activation page.

NOTES

Please note that this document is a brief guide, and that short guides also exist for configuring control parameters. The AlphaCCO support team will be happy to assist you if you require further guidance. Please do not hesitate to contact us at [.support@alphacco.com](mailto:support@alphacco.com)